



# **Grape County Eco Resort & Biodiversity Park**



**Grape County**







# Vasudhaiva Kutumbakam

**‘The world is one Family’ is the philosophy reflected in our Biodiversity Park where innumerable plants, animals, birds and insects coexist peacefully.**



# TOP '4' OBJECTIVES

## GRAPE COUNTY ECO-RESORT

1 MINIMIZING  
CARBON  
FOOTPRINT



2 MINIMIZING  
RESOURCE  
WASTAGE



3 MAXIMIZING  
REUSE AND  
RECYCLING



4 MINIMIZING  
DAMAGE TO  
NATURE



# Grape County Resort – Project Details

Total area of the project is 26600 sq. m.

Net area of project (after deductions) and SVAGRIHA project boundary = 21433.00 sq. m.

Total built-up area of the project = 1475.43 sq. m.

For SVAGRIHA certification, building meant for dining and banquet hall and two cottage structures / villas have been considered.



# Eco-friendly material



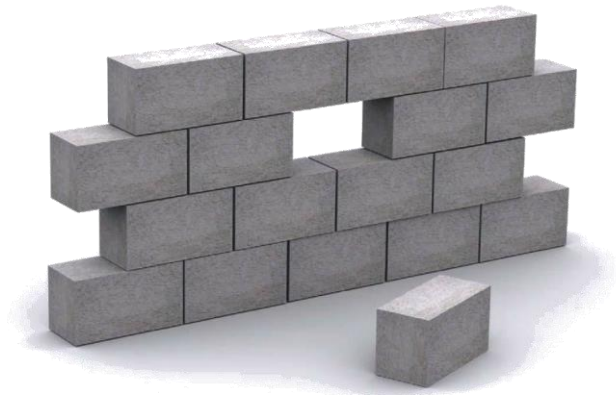
- Godra bricks



- Local Stones



- Shahabad Stones



- Fly ash bricks



- Recycled Wood



# Eco-friendly material



- Scrapped Metal



- Thermal glass for weather-proof structures



- Decorative light-weight Paneled wall

# Smart material selection



Use of LFF (low flow faucets)

Save 40% of Water Consumption



LFT (low flow toilets)

Save 7ltrs per flush than conventional Closet



LED Lights & Fixtures



# Building Design

- Window contribute 14% of respective carpet area. And they are toward windward side.
- Allow good cross ventilation within the room
- Reduce the usage of air-condition.
- Allow maximum daylights in the common areas and reduce light energy consumption in daytime.



# Cantilever Structures

- The Site was a contour land
- Designed Cantilever structures which helped us to retain the contour as it is & it did not disturb the land





# Our Green Initiatives

- Approx. 40 – 50 % of the resort is powered by 40 KW Grid Solar energy power system mounted as shelter for Car Parking.
- Dual Axis Hybrid Solar System Moves according to the Sun's Direction.
- We have total 60 KW power generation plant which generates around 198.4 units per day.
- These 198.4 units saves Rs. 3273.60 /- per day.
- We save approximately amount of Rs. 11.78 Lakhs annually.
- It is anticipated that there is reduction of 120 kg/day of carbon dioxide emission in our area due to installation of solar panels





# Root Zone System

**All the Kitchen water waste & Grey water naturally gets filtered through plant roots & reused for Landscaping**



Infrastructure: Gravity Based Root Zone System

Water Consumption: 30, 000 Liter per day

Recycling and Reuse: 30, 000 Liter per day  
(100% Reuse)

We save Rs. 2,16,000 /- Yearly, against the water expenses for landscaping.

This also saves 125 units of electricity per day which Approx. saves Rs. 7,32,000/- yearly



# Root Zone System



**Selected species for plantation on reed bed:**

**Phragmite sp, Pancratium Sp. Canna Indica (Kardali), Musa Paradisica (Banana), Commelina Nudiflorum, Weddellia Sp, Carica papaya (Papaya), Rosa sp, Citronella, Jasmine sp, Occimum sp, Tecoma sp**





# Root Zone System



**Before**



**After**



**Vermicompost: All the Garden waste generated goes to Vermicompost, which turns into Natural Manure, which is used in Landscaping .**



**All the waste is collected to the compost.  
Approx 200 kgs of Compost generated in one cycle  
Compost generated per year – Approx. 2400 Kg**

**Biogas: All the Kitchen waste is sent to the Biogas, Slurry from bio-gas is manure, so it is used plantation and landscaping.**



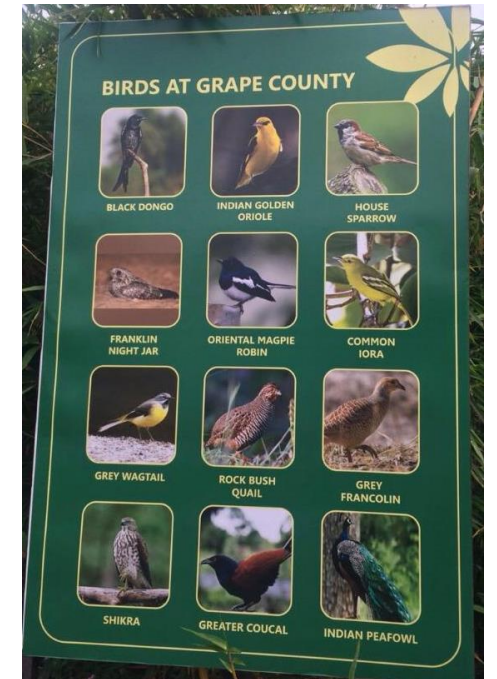
**Infrastructure: Biogas Generation Plant**

**Capacity: 200 Kg**



# Eco Practices at Grape County

- Strict guideline and sustainable practice for any sort of development with the property
  - No use of chemical fertilizer for landscaping & created maximum green spaces in the property
  - Promote Organic farming by encouraging local farmers to sell their product at our resort
  - All efforts are taken to make the property a “Plastic Free Zone”
- ### Operational Measures
- Training Programs for Employees conducted every quarterly for energy conservation and environmental aspects
  - Installed Informative board and instrument chart for Guest regarding environmental and energy conservation aspects.
  - We promote RO water to avoid the use of the Plastic bottles in the Restaurant





**We have saved 14 Cr. Litres of water in the  
Dam through the Rain Water Harvesting**





# Green Initiatives by Grape County



**Tree Plantation drive**



**Transplantation**



**Organic Farming**

Since 2012, till date we have planted more than 58,500 trees, & have also nurtured them.

All the Trees which are been planted are the Native trees.

# Social Initiatives by Grape County



**Educational Tours**



**Adopt a tree Campaign**



**India's only Insect Festival**



# Flora & Fauna at Grape County

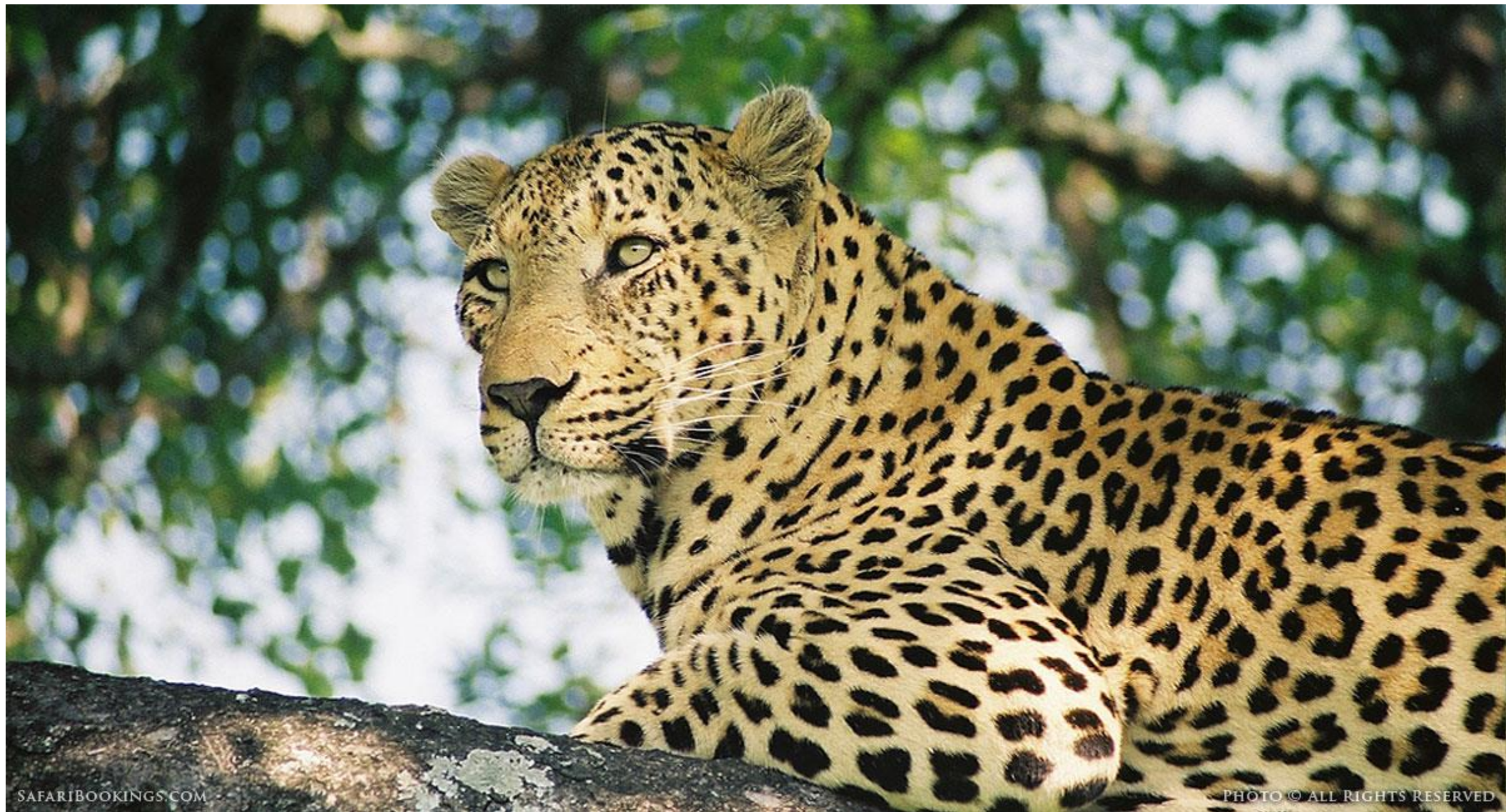
- More than 48 different kinds of Birds, 35 Different types of Butterflies & many types of Insects are seen here.















# **Awards & Appreciations**







**Awarded with  
Best  
'Renewable  
Energy  
Utilization'  
Award by TERI**







# **Certified with 5 Star rating under Swagriha**

**One of the Resort in Maharashtra to Receive  
5 Star Rating Award**



# VASUNDHARA – 2019



पर्यावरण विभाग,  
महाराष्ट्र शासन



महाराष्ट्र प्रदूषण  
नियंत्रण मंडळ

वासुंधरा पुरस्कार १९

जागरूक पर्यावरण दिन सोहळा - १९







# People behind the Project

**Ar. Shabbir Unwala**

Architect  
Design work Shop

**Ar. Sanjay Patil**

Architect  
Environ Planners

**Mr. Mark Sheehy**

Horticulturist  
Dublin, Ireland

**Ketaki & Manasi**

Environmentalism  
Oikos

**Ar. Purva Keskar**

Architect  
Vke:environmental

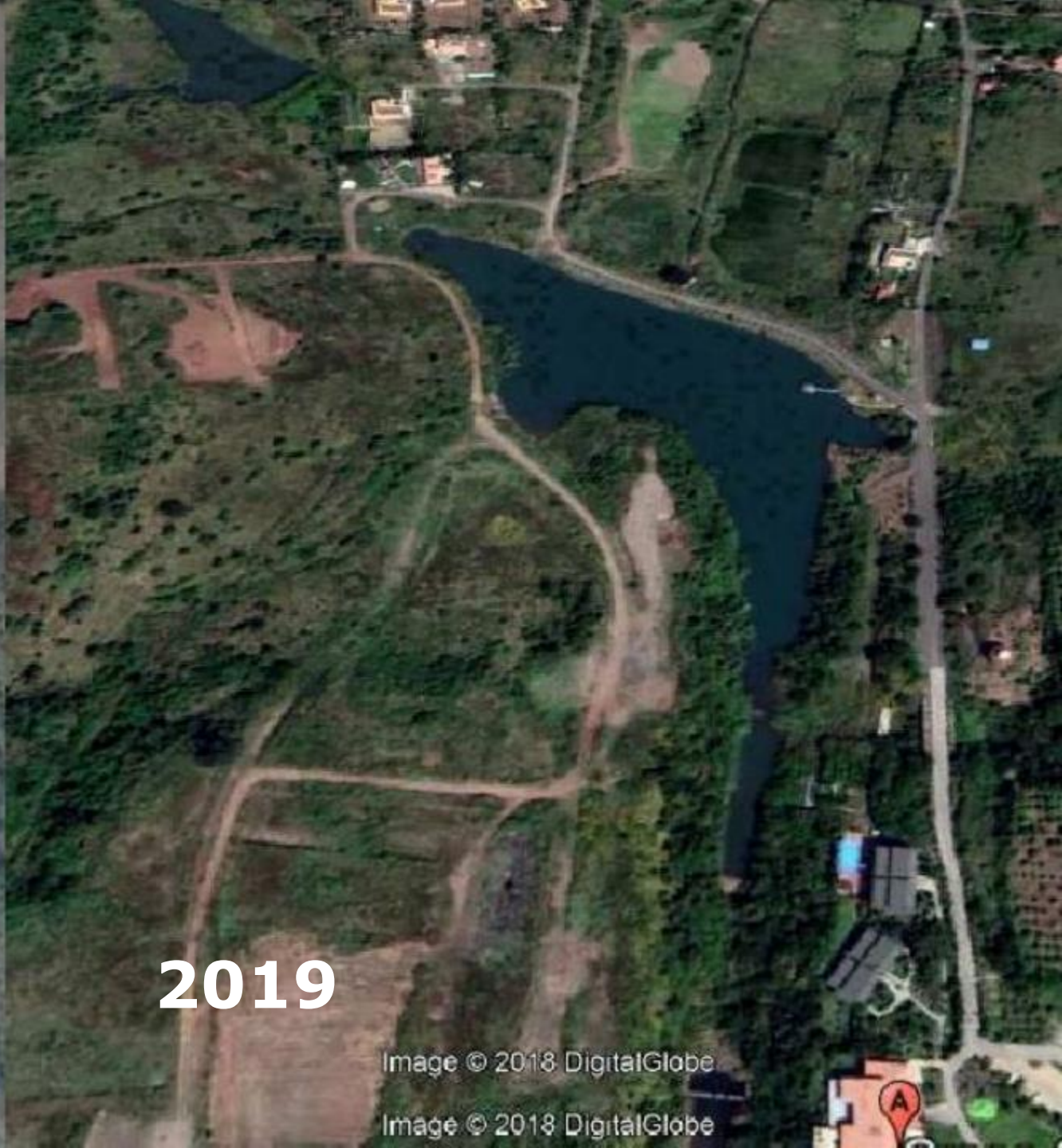






2012

Image © 2018 DigitalGlobe



2019

Image © 2018 DigitalGlobe

Image © 2018 DigitalGlobe







2012

Image © 2018 DigitalGlobe



2019





Grape County





**Thank You**